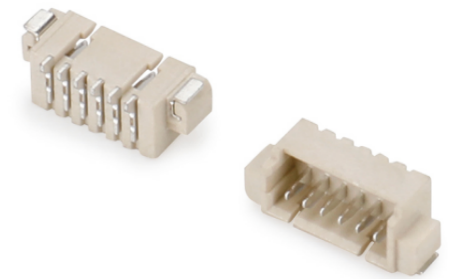




REV. LTR.	DESCRIPTION	APPROVAL	DATE
A2	Update drawing	W. Q. LI	2024.06.06

- Specifications:
1. Voltage rating:125V AC/DC.
 2. Current rating:1.0A AC/DC.
 3. Withstanding voltage:500V AC/minute.
 4. Ambient temperature range:-25~+85°C.
 5. Insulation resistance:≧100MΩ.
 6. Contact resistance:≧20mΩ.
 7. Applicable wire Sizes:AWG#26~#32.
 8. Lock Configuration:2 to 3Pin isl, ≧4Pin 2.
 9. Housing①:LCP UL94V-0 Natural.
 10. Upper terminal②:Brass/Tin Plating.
 11. Fitting Nail③:Brass/Tin Plating.

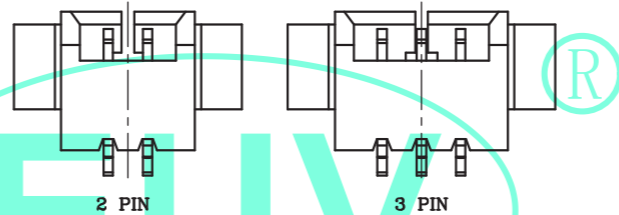
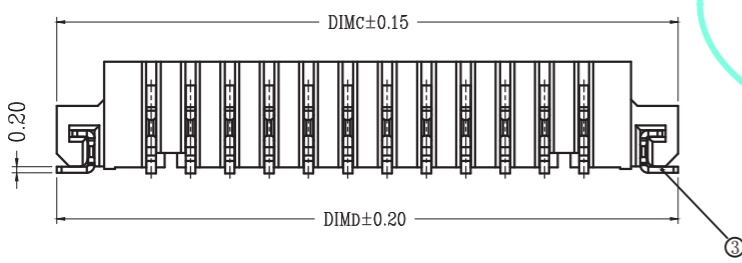
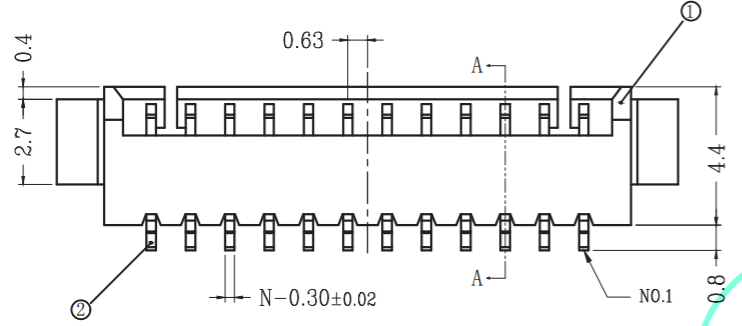
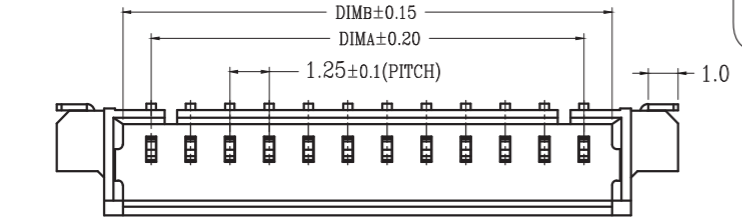


Outside drawing

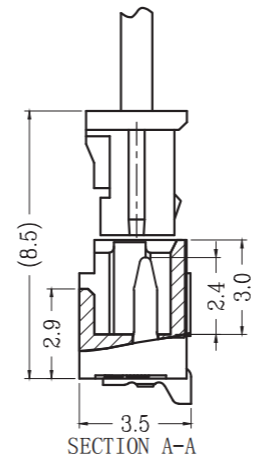
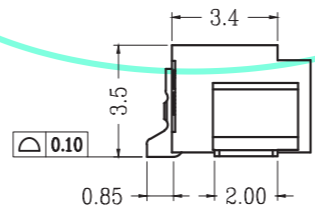
Product material No:

EN125AWT-***-***-***

- NO OF Poles
- Terminal Plating
- B=Bright-Tin
- M=Matt-Tin
- G=Gold flash
- Plastic Material
- P=PA6T
- T=PA9T
- L=LCP
- Packing
- T=Tube
- B=Bag
- R=Tape&Reel
- Plastic Color
- Y=Faint Yellow
- R=Red
- B=Black
- W=White

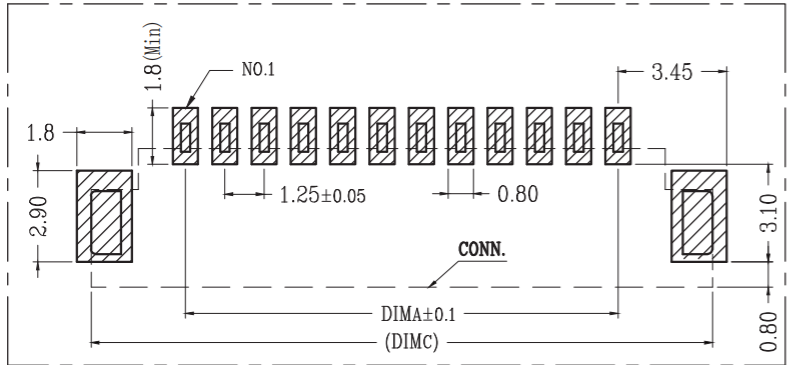


LOCK CONFIGURATION (锁扣结构)



Pin number:

Poles	DIM A	DIM B	DIM C	DIM D	Poles	DIM A	DIM B	DIM C	DIM D
2P	1.25	3.05	7.25	7.25	12P	13.75	15.55	19.75	19.75
3P	2.50	4.30	8.50	8.50	13P	15.00	16.80	21.00	21.00
4P	3.75	5.55	9.75	9.75	14P	16.25	18.05	22.25	22.25
5P	5.00	6.80	11.00	11.00	15P	17.50	19.30	23.50	23.50
6P	6.25	8.05	12.25	12.25	16P	18.75	20.55	24.75	24.75
7P	7.50	9.30	13.50	13.50	17P	20.00	21.80	26.00	26.00
8P	8.75	10.55	14.75	14.75	18P	21.25	23.05	27.25	27.25
9P	10.00	11.80	16.00	16.00	19P	22.50	24.30	28.50	28.50
10P	11.25	13.05	17.25	17.25	20P	23.75	25.55	29.75	29.75
11P	12.50	14.30	18.50	18.50					



Recommended P.C.B Layout
General Tolerance±0.05

<http://www.euvchn.com>



30~Above ±0.30	ANGLE: ∠±1°	TITLE	1.25mm Connectors (90° SMT)		
10~30 ±0.20	SCALE:1:1	PART NO.	EN125AWT-***-***-***		
5~10 ±0.15	SHEET:1 OF 1	APPROVAL	CHECK	DRAWN	DATE
0~5 ±0.10	PROJECT	W. Q. LI	X. H. LIN	K. J. ZENG	2024.06.06
TOLERANCES ARE (UNIT:mm)	SIZE:A4				